

**sinar** <sup>+</sup> p MF-L



User Manual

**Thank You!**

Congratulations on your purchase of this high-quality Sinar product. It was carefully manufactured by using top quality material and thoroughly tested for performance and reliability. We are very pleased you have chosen Sinar and thank you for your confidence.

Sinar combines highest demands on technology, materials, design and ease of operation. This equally applies to professional cameras, electronics and accessories.

Before use, please read the operating instructions carefully to correctly operate the Sinar camera and fully benefit from all the possibilities and advantages.

## Index

1.	Scope of Delivery	4
2.	General Information	4
3.	Operating Elements	5
4.	Camera Set-up	6
5.	Mounting the Lens	10
6.	The Lens Shade	11
7.	Mounting the Bellows Lens Hood	12
8.	Portrait / Landscape Mode	14
9.	The Plane of Sharpness	15
10.	Technical Data	16
11.	Accessories	17
12.	Sinar Core Products	19

# 1. Scope of Delivery

## 2. General Information

---

<b>Scope of Delivery p3 MF-L</b>	<b>Item-No. 491.83.030</b> 1x Case 1x Sinar p3 MF-L (view camera p3 incl. Adaptation Leica S) 1x User Manual
----------------------------------	---

---

<b>Scope of Delivery Kit</b>	<b>Item-No. 497.13.050/497.13.060</b> 1x Mounting Bracket 1x Bellows with Leica S Bayonet 1x User Manual
------------------------------	---

---

### General Information

The Sinar p MF-L was developed especially for photographers who wish to benefit from the unique characteristics of a Sinar view camera while using their Leica S high-end medium format camera. Exact control of perspective and selective sharpness, the most important creative tools in photography, are set and evaluated precisely on a view camera – all these advantages are now available for Leica S users. In addition, this solution offers the benefit of a distinct increase in quality by using high-resolution Sinaron lenses designed specifically for digital imaging.

Sinar Photography AG will not be liable for any damage on subjects to be captured, especially those resulting from dropping.

For focal lengths below 90mm it is not possible to focus on infinity due to the sensor position of the Leica S. So the minimum applicable focal length is 90 mm.

---

**Sinar p3 MF-L**  
**Item No.: 491.83.030**  
**Case included in delivery**  
**Without Leica S and Lens**



---

**Kit**  
**Item-No. 497.13.050/**  
**497.13.060**

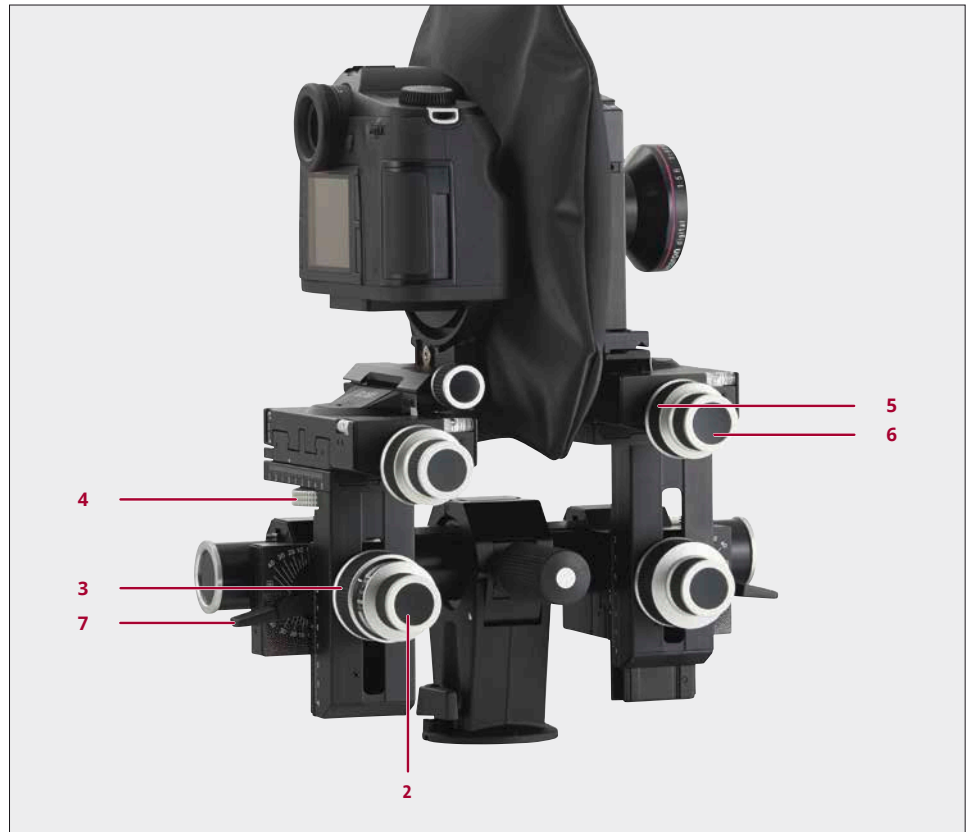
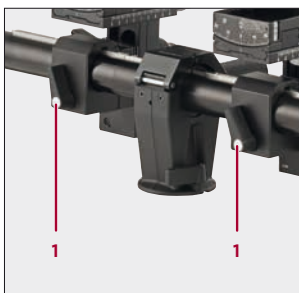


### 3. Operating Elements Sinar p MF-L

#### Operating Elements Sinar p MF-L

To benefit from the creative potential of the Sinar p3 MF-L view camera the following operating elements are at your disposal:

**Security Advice:** Please check the secure fixation of the lever (7) before you start fine adjustments.



**1**  
**Lever for Coarse Focusing**  
Coarse focusing is accomplished by moving the standards into the right position before you start fine adjustments with the fine focusing turning knob (2)

**2**  
**Fine focus gear with depth of field scale**  
Turning knob to fine focus the selected image section.

**3**  
**Micro meter drive for vertical shifting**  
Turning wheel to vertically adjust the rear standard.

**4**  
**Micro meter drive for horizontal shifting**  
Turning wheel to horizontally adjust the rear standard.

**5**  
**Micro meter drive to tilt the horizontal axis H**  
Turning knob to tilt the front standard.

**6**  
**Micro meter drive to swing the vertical axis V**  
Turning knob to swing the front standard.

**7**  
**Clamping lever for coarse tilt on the horizontal axis H**  
Vertical alignment of the standards with tilted camera. Furthermore for coarse tilt so that the full range of the fine adjustments can be used when defining the plane of sharpness.

## 4. Camera Set-up

### Mounting the camera

With the Rail Clamp 411.21.000 the Sinar view camera p MF-L is mounted either on the Sinar Pan Tilt Head 516.61.000 or directly on a tripod.

1. Turn the clamping lever (1) to the right (release) – Fit camera on Pan Tilt Head or tripod and tighten the tripod screw (2) – Turn the clamping lever (1) to the left (tighten)
2. Slack off the twist grip (3) a few turns to shift the camera along the rail for balancing or swivelling. Slack off by a few turns more to remove the camera.



**1**  
Clamping Lever

**2**  
Tripod Screw

**3**  
Twist Grip

## 4. Camera Set-up

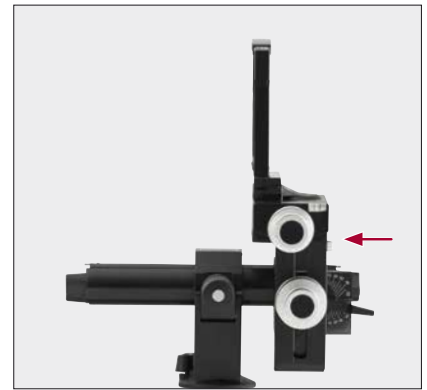
### Mounting the camera 2

Assemble the view camera as follows:

1. Position the basic rail in the middle of the rail clamp and mount the rail clamp onto the tripod. Remove both rail caps.
2. Move the front standard on the basic rail.
3. Attach the rail cap.
4. Move the bearer on the basic rail.



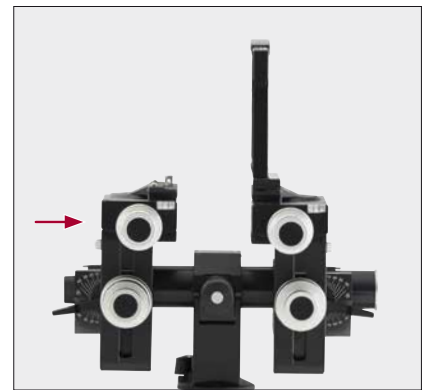
1



2



3

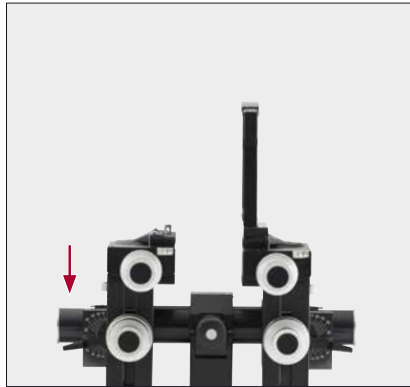


4

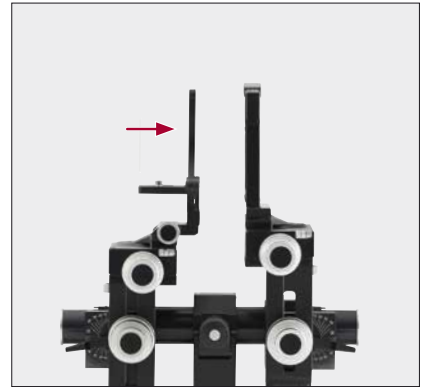
## 4. Camera Set-up

### Mounting the camera 3

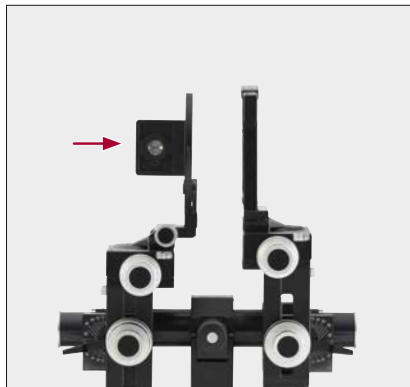
5. Attach the second rail cap.
6. Attach the mounting bracket onto the bearer.
7. Rotate the mounting bracket in vertical position to mount the Leica S.
8. Attach the Leica S with the camera screw.



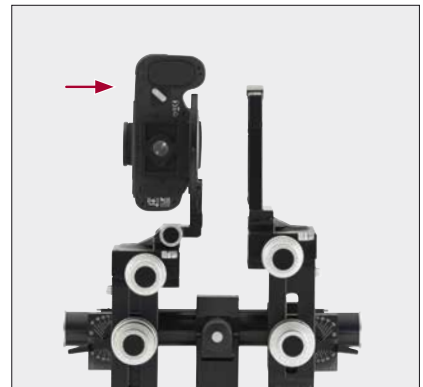
5



6



7



8



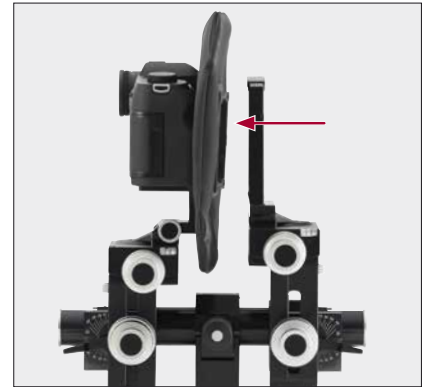
## 4. Camera Set-up

### Mounting the camera 4

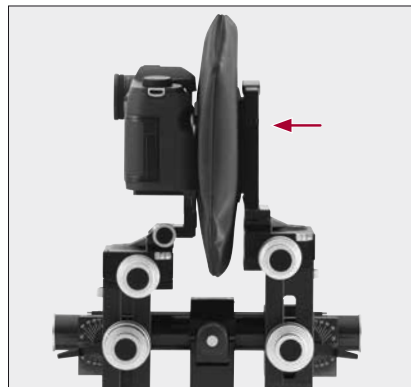
9. Rotate the camera to horizontal position to easier mount the bellows.
10. Attach the bellows to the Leica S medium format camera.
11. Latch the bellows to the front standard.
12. Mount the desired professional lens.



9



10



11



12

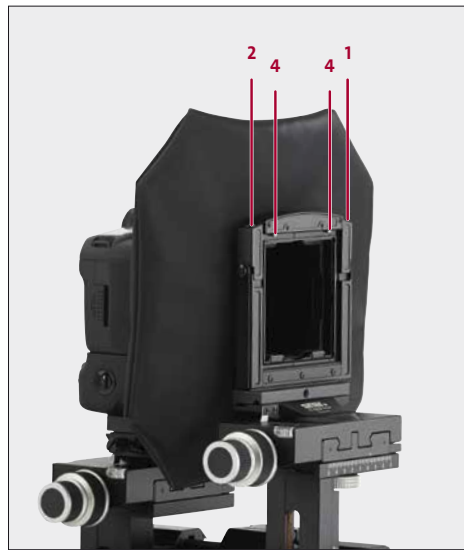
## 5. Mounting Lenses

### Mounting Lenses

The Sinar p MF-L is supplied without lens. Sinar Photography AG offers a wide range of Sinaron digital lenses with different focal length. In addition lenses from other suppliers can be used with Sinar p MF-L. For such lenses Sinar offers the respective lens boards and the assembling.

The front coupling frame of the Sinar p MF-L is equipped with a snap latch, so no tools are required for the attachment of the lens. The lens board is placed on the lower edge of the frame and then latched in place at the upper edge of the coupling frame. Sinar recommends testing the secure placement by checking the frame manually.

Sinar recommends testing the secure placement by checking the frame manually.



**1**

#### Detaching the bellows

The bellows is detached by pressing the button on the top right side of the coupling frame.

**2**

#### Detaching the lens

The lens is detached by pressing the button (2) on the top left side of the coupling frame. Slightly pull the release lock (3) at the same time and remove the lens.

**3**

#### Release Lock for Lenses

This release lock serves as lens board holder to secure the lens. Before attaching the lens the release lock must be slightly pulled.

**4**

#### Snap Lock

## 6. The Lens Shade

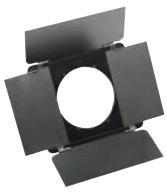
### Attaching the lens shade

The following accessories are required for attaching the Sinar Lens Shade:

547.81.xxx	Adapter Ring
493.23.041	Lens Shade p3 / arTec / lanTec

To attach the Sinar Lens Shade please proceed as follows:

1. Equip your lens with the corresponding lens adapter ring.
2. Fix the lens shade to the adapter ring by means of fastening the screw.



Lens Shade



Lens Adapter Ring



1



2



## 7. Attaching the Bellows Lens Hood

### Attaching the Bellows Lens Hood

To attach the Sinar bellows lens hood please proceed as follows:

1. Equip your lens with the corresponding Lens Adapter Ring.
2. Attach the Bellows / Filter Holder 100 on the adapter ring and fix the screw.
3. Insert the Tapered Bellows from the top into the Bellows / Filter Holder 100.
4. Attach the Bellows Clip to the bottom right corner of the Tapered Bellows.
5. Fix the Rod Holder 100 on the front standard.
6. Insert the Joint Rod 2 into the notch of the Rod Holder 100 and fix the screw on the Joint Rod.



Lens Adapter Ring



Bellows-/Filter Holder 100



Rod Holder 100



Joint Rod 2



Tapered Bellows 4x5/100



Bellows Holder Clip



1



2



3/4



5/6

## 7. Attaching the Bellows Lens Hood

### Attaching the Bellows Lens Hood

7. Insert the other side of the Joint Rod 2 into the notch of the Bellows Clip. Position the Bellows Lens Hood avoiding vignetting and fix the screws.



Fully assembled Bellows Lens Hood on the Sinar p MF-L.

## 8. Change from Portrait to Landscape

### Portrait/Landscape

Change the format from portrait to landscape as follows:

Release the stopping lever (1).

The camera can be rotated and then fixed in any position. The bellows provides a revolving bayonet and has not to be removed for camera position change.



1

#### Stopping Lever

Press the lever downwards for release.

## 9. The Plane of Sharpness

---

### The Rear Standard

Always establish the plane of maximum sharpness before stopping down.

Displacement of the Rear Standard influences the plane of sharpness and the perspective.

---

### The Front Standard

Displacement of the Front Standard influences only the plane of sharpness.



---

**A**  
Rear Standard

**B**  
Front Standard

## 10. Technical Data

Vertical shift range	4 cm up 2 cm down
Horizontal shift range	3 cm to the left 5 cm to the right
Coarse tilt	± 45°
Fine tilt	± 19°
Swings	± 50°
Fine focus	5 cm
Dimension carrier frame	100 mm
Tripod adaptation	3/8" thread on rail clamp
Weight	4.7 kg
Lenses	Sinaron, CPL und eShutter; Focal Length 90 to 180 mm

### Image Sensor/ Lens Centering

To position the image sensor of the Leica S in the optical axis please proceed as follows:

<b>P2</b>	<b>Front Standard</b>	
	Vertical Shift	5 mm down
	Horizontal Shift	26 mm to the left
	<b>Rear Standard</b>	
	Vertical Shift	0 Position
	Horizontal Shift	0 Position
<b>P3</b>	<b>Front Standard</b>	
	Vertical Shift	20 mm up
	Horizontal Shift	0 Position
	<b>Rear Standard</b>	
	Vertical Shift	0 Position
	Horizontal Shift	0 Position



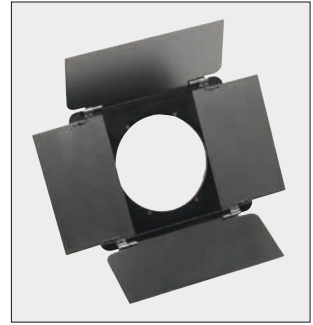
## 11. Accessories



452.16.010  
Tapered Bellows 4x5/100



421.21.000  
Rail Extension 6/15



493.23.041  
Lens Shade



473.31.000  
Bellows Clip



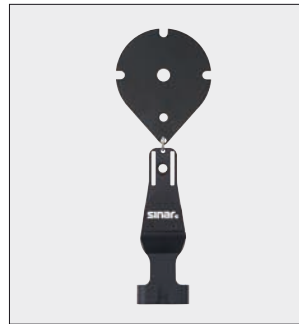
553.15.100  
Reduction Adapter 4x5/100



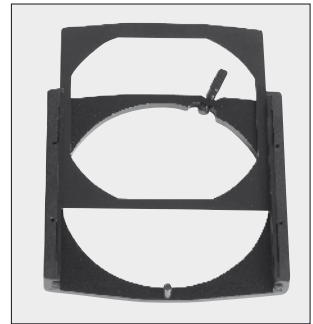
472.41.000  
Rod Holder 100



472.51.010  
Joint Rod 2



581.01.001  
Strain Relief



473.41.000  
Bellows/Filter Holder 100

## 11. Accessories



516.61.000  
Pan Tilt Head 2



411.71.000  
Geared Rail Clamp



475.66.020  
Sinar p3 System Case



547.81.XXX  
Lens Adapter Ring

## 12. Sinar Core Products



Sinar p3



Sinar rePro



Sinar lanTec



Sinar arTec



Sinar eXact digital back



Sinar eShutter



### **Flexibility and Creativity**

For more than 65 years, Sinar is the leading manufacturer of view camera systems for professional photography. Sinar stands for exquisite camera precision made in Switzerland as well as for ergonomic design and unlimited creative freedom. All relevant elements for composing the image are available, like swings and tilts or horizontal and vertical shifts. The consistently modular products include digital capture devices, digital lenses, capture software and view cameras. Sinar customers profit from solutions designed as complete imaging systems supplied and supported from a single source. This system approach makes the difference and delivers superb image quality. In-house manufacturing, expert know-how in fine mechanics and interaction with specialized suppliers meet the highest demands and ensure best possible products with excellent long-term reliability. Continuous new and further developments guarantee the integration of modern and coming technologies into the flexible Sinar product range.